

A12308

Leader in Biomolecular Solutions for Life Science



RAB7 Rabbit mAb

Catalog No.: A12308

Recombinant

11 Publications

Basic Information

Observed MW

23 kDa

Calculated MW

23kDa

Category

Monoclonal Antibody

Applications

WB,IHC-P,IF/ICC,IP,ELISA

Cross-Reactivity

Human,Mouse,Rat

CloneNo number

ARC54437

Recommended Dilutions

WB 1:55000 - 1:220000

IP 0.5µg-4µg antibody for
200µg-400µg extracts
of whole cells

IF/ICC 1:1000 - 1:8000

IHC-P 1:1000 - 1:4000

ELISA Recommended starting
concentration is 1
µg/mL. Please optimize
the concentration
based on your specific
assay requirements.

Contact



www.abclonal.com

Background

RAB family members are small, RAS-related GTP-binding proteins that are important regulators of vesicular transport. Each RAB protein targets multiple proteins that act in exocytic / endocytic pathways. This gene encodes a RAB family member that regulates vesicle traffic in the late endosomes and also from late endosomes to lysosomes. This encoded protein is also involved in the cellular vacuolation of the VacA cytotoxin of *Helicobacter pylori*. Mutations at highly conserved amino acid residues in this gene have caused some forms of Charcot-Marie-Tooth (CMT) type 2 neuropathies.

Immunogen Information

Gene ID

7879

Swiss Prot

P51149

Immunogen

Synthetic peptide. This information is considered to be commercially sensitive.

Synonyms

RAB7; CMT2B; PRO2706

Product Information

Source

Rabbit

Isotype

IgG

Purification

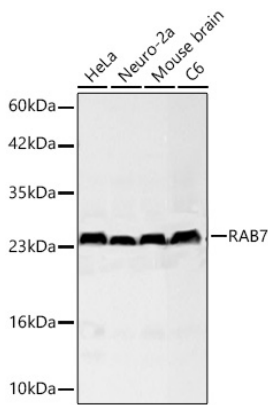
Affinity purification

Storage

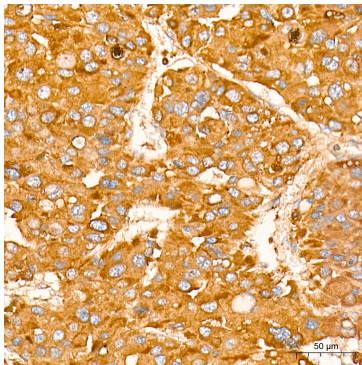
Store at -20°C. Avoid freeze / thaw cycles.

Buffer: PBS containing 50% glycerol and 0.05% BSA, preserved with proclin300 or sodium azide (as specified on the Certificate of Analysis), pH 7.3.

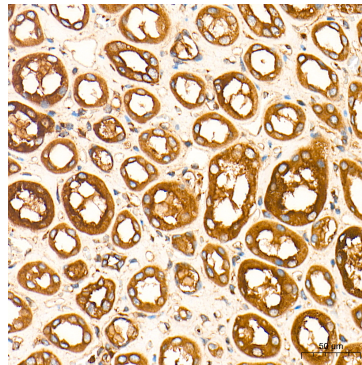
Validation Data



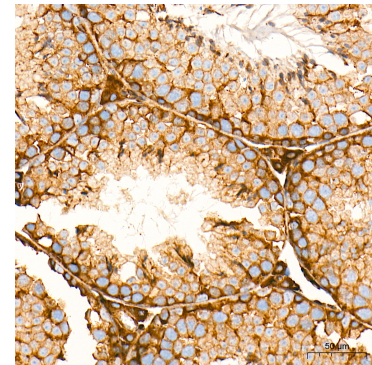
Western blot analysis of various lysates using RAB7 Rabbit mAb (A12308) at 1:55000 dilution incubated overnight at 4°C.
 Secondary antibody: HRP-conjugated Goat anti-Rabbit IgG (H+L) (AS014) at 1:10000 dilution.
 Lysates/proteins: 25 µg per lane.
 Blocking buffer: 3% nonfat dry milk in TBST.
 Detection: ECL Basic Kit (RM00020).
 Exposure time: 20s.



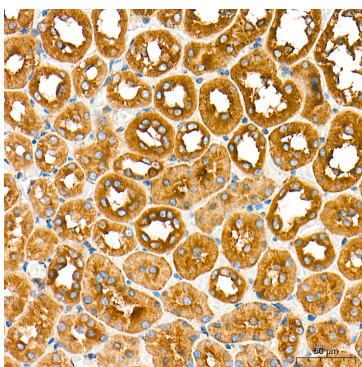
Immunohistochemistry analysis of paraffin-embedded Human liver cancer tissue using RAB7 Rabbit mAb (A12308) at a dilution of 1:3000 (40x lens). High pressure antigen retrieval performed with 0.01M Tris-EDTA Buffer (pH 9.0) prior to IHC staining.



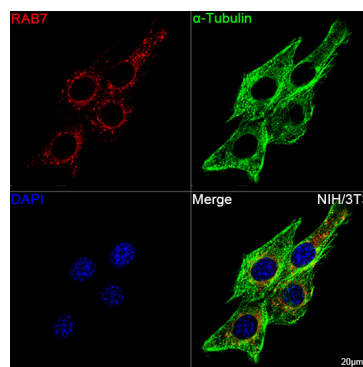
Immunohistochemistry analysis of paraffin-embedded Human kidney tissue using RAB7 Rabbit mAb (A12308) at a dilution of 1:3000 (40x lens). High pressure antigen retrieval performed with 0.01M Tris-EDTA Buffer (pH 9.0) prior to IHC staining.



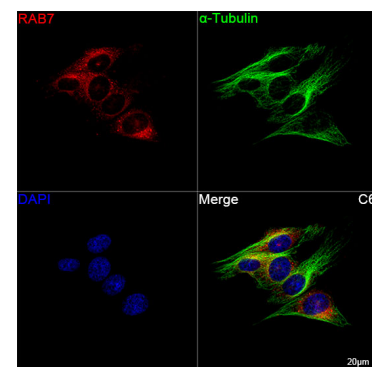
Immunohistochemistry analysis of paraffin-embedded Mouse testis tissue using RAB7 Rabbit mAb (A12308) at a dilution of 1:3000 (40x lens). High pressure antigen retrieval performed with 0.01M Tris-EDTA Buffer (pH 9.0) prior to IHC staining.



Immunohistochemistry analysis of paraffin-embedded Rat kidney tissue using RAB7 Rabbit mAb (A12308) at a dilution of 1:3000 (40x lens). High pressure antigen retrieval performed with 0.01M Tris-EDTA Buffer (pH 9.0) prior to IHC staining.



Confocal imaging of NIH/3T3 cells using RAB7 Rabbit mAb (A12308, dilution 1:2000) followed by a further incubation with Cy3 Goat Anti-Rabbit IgG (H+L) (AS007, dilution 1:500) (Red). The cells were counterstained with α-Tubulin Mouse mAb (AC012, dilution 1:400) followed by incubation with ABflo® 488-conjugated Goat Anti-Mouse IgG (H+L) Ab (AS076, dilution 1:500)

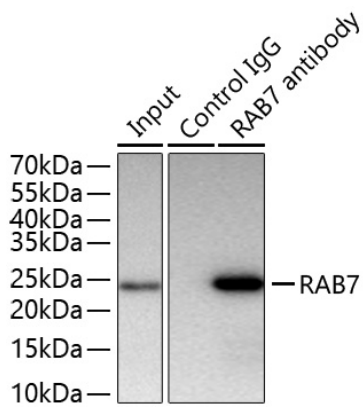


Confocal imaging of C6 cells using RAB7 Rabbit mAb (A12308, dilution 1:2000) followed by a further incubation with Cy3 Goat Anti-Rabbit IgG (H+L) (AS007, dilution 1:500) (Red). The cells were counterstained with α-Tubulin Mouse mAb (AC012, dilution 1:400) followed by incubation with ABflo® 488-conjugated Goat Anti-Mouse IgG (H+L) Ab (AS076, dilution 1:500)

Validation Data

(Green). DAPI was used for nuclear staining (Blue). Objective: 100x.

(Green). DAPI was used for nuclear staining (Blue). Objective: 100x.



Immunoprecipitation of RAB7 from 300 μ g extracts of HeLa cells was performed using 0.5 μ g of RAB7 Rabbit mAb (A12308). Rabbit Control IgG (AC005) was used to precipitate the Control IgG sample. IP samples were eluted with 1x Laemmli Buffer. The Input lane represents 10% of the total input. Western blot analysis of immunoprecipitates was conducted using RAB7 Rabbit mAb (A12308) at a dilution of 1:5000.