

A15639

Leader in Biomolecular Solutions for Life Science



# ANT2/SLC25A5 Rabbit pAb

Catalog No.: A15639

3 Publications

## Basic Information

### Observed MW

34 kDa

### Calculated MW

33 kDa

### Category

Polyclonal Antibody

### Applications

WB,IHC-P,IF/ICC,ELISA

### Cross-Reactivity

Human,Mouse,Rat,Monkey

## Background

This gene is a member of the mitochondrial carrier subfamily of solute carrier protein genes. The product of this gene functions as a gated pore that translocates ADP from the cytoplasm into the mitochondrial matrix and ATP from the mitochondrial matrix into the cytoplasm. The protein forms a homodimer embedded in the inner mitochondria membrane. Suppressed expression of this gene has been shown to induce apoptosis and inhibit tumor growth. The human genome contains several non-transcribed pseudogenes of this gene.

## Recommended Dilutions

**WB** 1:500 - 1:5000

**IF/ICC** 1:50 - 1:200

**IHC-P** 1:50 - 1:200

**ELISA** Recommended starting concentration is 1 µg/mL. Please optimize the concentration based on your specific assay requirements.

## Immunogen Information

### Gene ID

292

### Swiss Prot

P05141

### Immunogen

Synthetic peptide. This information is considered to be commercially sensitive.

### Synonyms

T2; T3; 2F1; AAC2; ANT2; SLC25A5

## Product Information

### Source

Rabbit

### Isotype

IgG

### Purification

Affinity purification

### Storage

Store at -20°C. Avoid freeze / thaw cycles.

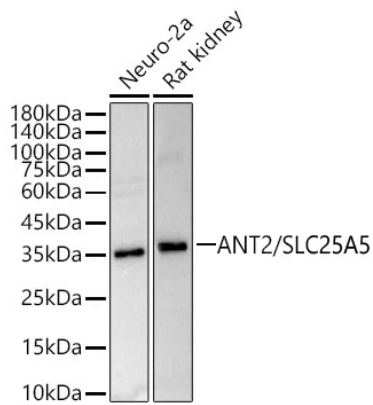
Buffer: PBS, pH 7.3, containing 50% glycerol. Preserved with Proclin300 or sodium azide. May contain 0.05% BSA as specified on the Certificate of Analysis.

## Contact



[www.abclonal.com](http://www.abclonal.com)

## Validation Data



Western blot analysis of various lysates, using ANT2/SLC25A5 Rabbit pAb (A15639) at 1:1000 dilution.

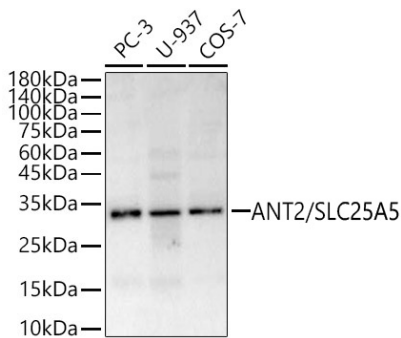
Secondary antibody: HRP-conjugated Goat anti-Rabbit IgG (H+L) (AS014) at 1:10000 dilution.

Lysates/proteins: 25µg per lane.

Blocking buffer: 3% nonfat dry milk in TBST.

Detection: ECL Basic Kit (RM00020).

Exposure time: 20s.



Western blot analysis of various lysates, using ANT2/SLC25A5 Rabbit pAb (A15639) at 1:1000 dilution.

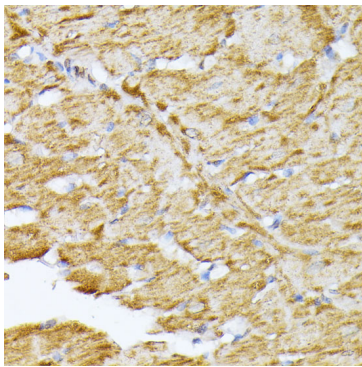
Secondary antibody: HRP-conjugated Goat anti-Rabbit IgG (H+L) (AS014) at 1:10000 dilution.

Lysates/proteins: 25µg per lane.

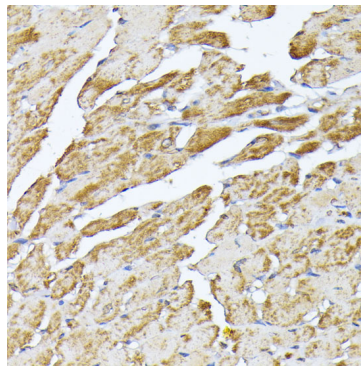
Blocking buffer: 3% nonfat dry milk in TBST.

Detection: ECL Basic Kit (RM00020).

Exposure time: 60s.



Immunohistochemistry analysis of paraffin-embedded Rat heart using ANT2/SLC25A5 Rabbit pAb (A15639) at dilution of 1:100 (40x lens). Microwave antigen retrieval performed with 0.01M PBS Buffer (pH 7.2) prior to IHC staining.



Immunohistochemistry analysis of paraffin-embedded Mouse heart using ANT2/SLC25A5 Rabbit pAb (A15639) at dilution of 1:100 (40x lens). Microwave antigen retrieval performed with 0.01M PBS Buffer (pH 7.2) prior to IHC staining.