

Lambda, Light Chains; Clone LcN-2

Catalog Number	Format	Volume
A00155-0002	(Ready-To-Use)	2 ml
A00155-0007	(Ready-To-Use)	7 ml
A00155-0025	(Ready-To-Use)	25 ml
A00155-C.1	(Concentrate)	0.1 ml
A00155-C	(Concentrate)	1 ml

Intended Use

For In-Vitro Diagnostic Use. This antibody is intended for the qualitative visualization of the anatomical elements listed in the Specificity section. It is intended to be used within an Immunohistochemistry (IHC) procedure on formalin-fixed paraffin-embedded (FFPE) human tissue followed by visualization by light microscopy.

Description

Titer/Working Dilution:	Ready-to-Use: No further dilution required.
	Concentrate: Immunohistochemistry (Frozen and Formalin-fixed): 0.5-1 µg/ml
	Flow Cytometry: 0.5-1 µg/million cells
	Immunofluorescence: 1-2 µg/ml
	Western Blotting: 0.5-1 µg/ml
	Immunoprecipitation: 0.5-1 µg/500µg protein lysate

Species:	Mouse
Immunogen:	Purified human IgG
Clone:	LcN-2
Isotype:	IgG2a, Kappa
Mol. Wt. of Antigen:	22.5 kDa
Format:	Ready-To-Use antibody has been pre-titered and quality controlled to work on formalin-fixed paraffin-embedded as well as acetone fixed cryostat tissue sections. No further titration is required.

Concentrate antibody is provided at 200µg/ml of Ab purified from Bioreactor Concentrate by Protein A/G. Prepared in 10mM PBS with 0.05% BSA & 0.05% Sodium Azide.

Specificity: This monoclonal antibody is specific to the lambda light chain of immunoglobulins and shows no cross-reaction with the kappa light chain or any of the five heavy chains.

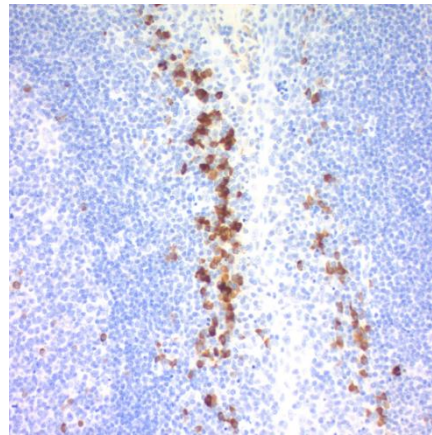
Background: In mammals, the two light chains in an antibody are always identical, with only one type of light chain, kappa or lambda. The ratio of kappa to lambda is 70:30. However, with the occurrence of multiple myeloma or other B-cell malignancies, this ratio is disturbed. An antibody to the lambda light chain is reportedly useful in the identification of leukemias, plasmacytomas, and certain non-Hodgkin's lymphomas. Demonstration of clonality in lymphoid infiltrates indicates that the infiltrate is malignant.

Species Reactivity:	Human. Others not known.
Positive Control:	293T, Raji or HPBL cells. Tonsil or spleen.
Cellular Localization:	Cell surface, cytoplasmic and secreted.
Microbiological State:	Nonsterile

Materials and Reagents Required but not Provided

- Control tissue and reagents
- Xylene, graded alcohols, and deionized/distilled water

- Antibody Diluent.
 - IHC detection system. Suggested: ScyTek Cat# ABZ125 "CRF Anti-Polyvalent HRP Polymer" and ScyTek Cat# ACV500 "DAB Chromogen/Substrate Kit (High Contrast)".
 - Wash buffer for rinses (ScyTek Cat# TBT500)
 - HIER Retrieval Solution
 - Hematoxylin counterstain and bluing reagent (ScyTek Cat# HMM500 and BRT500)
 - Mounting medium and coverslips
- Note:** ScyTek Laboratories has a wide range of IHC reagents and ancillaries that can be found at scytek.com.



Formalin-paraffin tonsil stained with Lambda, Light Chains; Clone LcN-2. Note cell membrane and cytoplasmic staining.

Procedure


- Tissue Section Pretreatment (Highly Recommended):** Staining of formalin fixed paraffin embedded tissue sections is significantly enhanced by pretreatment with Tis-EDTA HIER Solution (10x) pH 9.0 (ScyTek catalog# TES500) or Citrate Plus (10x) HIER Solution (ScyTek catalog# CPL500)
- Primary Antibody Incubation Time:** We suggest an incubation period of 30 minutes at room temperature. However, depending upon the fixation conditions and the staining system employed, optimal incubation should be determined by the user.
- Visualization:** For maximum staining intensity we recommend the "CRF Anti-Polyvalent HRP Polymer" (ScyTek catalog# ABZ125, see IFU for instructions) combined with the "DAB Chromogen/Substrate Bulk Pack (High Contrast)" (ScyTek catalog# ACV500, see IFU for instructions).


Storage and Stability

Do not Freeze. Store at 2-8°C. Return to 2-8° immediately after use. Do not use after expiration date printed on label. Verify visually that antibody has not been contaminated before use. Do not use if reagent becomes cloudy or precipitates.

Limitations

Immunohistochemistry is a complex technique involving both histological and immunological detection methods. Tissue processing and handling prior to immunostaining can cause inconsistent results. Variations in fixation and embedding or the inherent nature of the tissue specimen may cause variations in results. Endogenous peroxidase activity or pseudoperoxidase activity in erythrocytes and endogenous biotin may cause non-specific staining depending on detection system used. This data sheet's

Storage: 2° C  8° C

 ScyTek Laboratories, Inc.
205 South 600 West
Logan, UT 84321
U.S.A.

CE

EC REP

Emergo Europe
Westervoortsedijk 60
6827 AT Arnhem, The Netherlands

Instructions For Use

A00155-IFU-IVD

Rev. Date: Feb. 6, 2025

Revision: 2

Page 2 of 2

P.O. Box 3286 - Logan, Utah 84323, U.S.A. - Tel. (800) 729-8350 – Tel. (435) 755-9848 - Fax (435) 755-0015 - www.ScyTek.com

recommendations and procedures were validated using ScyTek IHC reagents and may not be suitable for other detection systems.

Precautions



1. Contains Sodium Azide as a preservative (0.09% w/v), do not ingest. Sodium Azide may react with lead and copper plumbing to form highly explosive metal azides. Upon disposal, flush with large volumes of water to prevent azide build-up in plumbing. This product contains no hazardous material at a reportable concentration according to U.S. 29 CFR 1910.1200, OSHA Hazardous Communication Standard and EC Directive 91/155/EC.
2. Do not pipette by mouth.
3. Avoid contact of reagents and specimens with skin and mucous membranes.
4. Avoid microbial contamination of reagents or increased nonspecific staining may occur.
5. The user must validate any procedures and recommendations that differ from this data sheet.
6. The SDS may be found at scytek.com

References

1. Campbell JP et. al. J Immunol Methods. 2013;391(1-2):1-13.

Warranty

No products or "Instructions For Use (IFU)" are to be construed as a recommendation for use in violation of any patents. We make no representations, warranties or assurances as to the accuracy or completeness of information provided on our IFU or website. Our warranty is limited to the actual price paid for the product. ScyTek Laboratories, Inc. is not liable for any property damage, personal injury, time or effort or economic loss caused by our products.

Storage: 2° C  8° C ScyTek Laboratories, Inc.
205 South 600 West
Logan, UT 84321
U.S.A.

EC REP

Emergo Europe
Westervoortsedijk 60
6827 AT Arnhem, The Netherlands