

AS040

Leader in Biomolecular Solutions for Life Science



Rhodamine (TRITC)-conjugated Goat anti-Rabbit IgG (H+L)

Catalog No.: AS040 **38 Publications**

Basic Information

Observed MW

Calculated MW

Category

Secondary Antibody

Applications

IF/ICC,FC

Cross-Reactivity

Rabbit

Conjugate

Rhodamine. Ex:550nm. Em:570nm.

Background

Secondary antibodies are affinity-purified antibodies which will work with target-specific primary antibody in the detection, sorting or purification of its specified target. Secondary antibodies offer increased versatility enabling users to use many detection systems (e.g. HRP, AP, fluorescence). They can also provide greater sensitivity through signal amplification as multiple secondary antibodies. Most commonly, secondary antibodies are generated by immunizing the host animal (different from host species of primary antibody) with a pooled population of normal immunoglobulins from the host species of primary antibody and can be further purified and modified (i.e. antibody fragmentation, label conjugation, etc.) to ensure well-characterized specificity to corresponding normal immunoglobulins.

Recommended Dilutions

IF/ICC 1:50 - 1:200

FC 1:50 - 1:200

Immunogen Information

Gene ID

Swiss Prot

Immunogen

This information is considered to be commercially sensitive.

Synonyms

Contact

 www.abclonal.com

Product Information

Source

Goat

Isotype

TRITC conjugated IgG

Purification

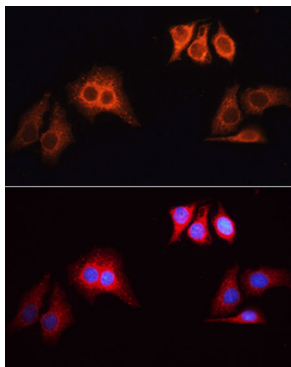
Affinity purification

Storage

Store at -20°C. Avoid freeze / thaw cycles.

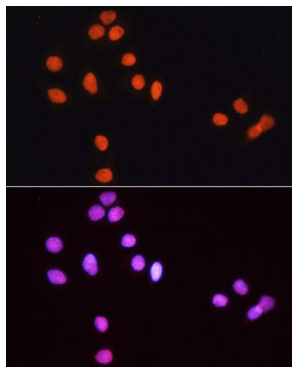
Buffer: PBS with 0.025% Sodium Azide,0.75% BSA,50% glycerol,pH7.3.

Validation Data



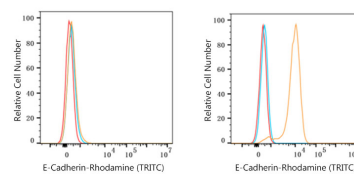
Immunofluorescence analysis of HeLa cells, using Rhodamine (TRITC) Goat Anti-Rabbit IgG (H+L) (A3716) as the primary antibody at dilution of 1:100. The cells were incubated with the primary antibody overnight at 4°C.

Secondary antibody: Rhodamine (TRITC) Goat Anti-Rabbit IgG (H+L) (AS040) at 1:200 dilution.
Blue: DAPI for nuclear staining.



Immunofluorescence analysis of HeLa cells, using Rhodamine (TRITC) Goat Anti-Rabbit IgG (H+L) (A0942) as the primary antibody at dilution of 1:100. The cells were incubated with the primary antibody overnight at 4°C.

Secondary antibody: Rhodamine (TRITC) Goat Anti-Rabbit IgG (H+L) (AS040) at 1:100 dilution.
Blue: DAPI for nuclear staining.



Flow cytometry: 1×10^6 K-562 cells (negative control, left) and A-431 cells (right) were surface-stained with Purified Rabbit anti-Human E-Cadherin mAb (5 μ l/Test, orange line) or secondary antibody only (blue line). Non-fluorescently stained K-562 and A-431 cells were used as blank control (red line). Rhodamine (TRITC) Goat Anti-Rabbit IgG (H+L) (AS040, 1:200) was used as a secondary antibody.