

A20021

Leader in Biomolecular Solutions for Life Science



SARS-CoV-2 N Protein Rabbit mAb,BSA and glycerol free

Catalog No.: A20021

Recombinant

17 Publications

Basic Information

Observed MW

46kDa (Recombinant SARS-CoV-2 Nucleocapsid Protein)

Calculated MW

46kDa

Category

SMab Recombinant Monoclonal Antibody

Applications

WB,ELISA

Cross-Reactivity

SARS-CoV-2

CloneNo number

ARC5077-02

Recommended Dilutions

WB 1:1000 - 1:6000

ELISA Recommended starting concentration is 1 µg/mL. Please optimize the concentration based on your specific assay requirements.

Contact



www.abclonal.com

Background

Packages the positive strand viral genome RNA into a helical ribonucleocapsid (RNP) and plays a fundamental role during virion assembly through its interactions with the viral genome and membrane protein M. Plays an important role in enhancing the efficiency of subgenomic viral RNA transcription as well as viral replication. May modulate transforming growth factor-beta signaling by binding host SMAD3.

Immunogen Information

Gene ID

43740575

Swiss Prot

P59595

Immunogen

Recombinant protein (or fragment). This information is considered to be commercially sensitive.

Synonyms

Nucleoprotein; NP; SARS-CoV-2 N Protein

Product Information

Source

Rabbit

Isotype

IgG

Purification

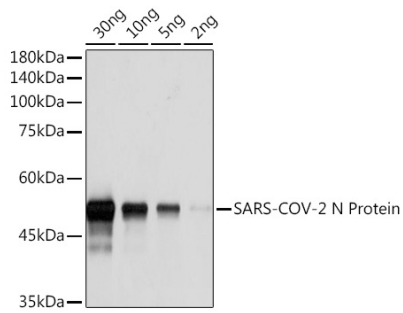
Affinity purification

Storage

Store at -20°C This product will freeze at -20°C so it is recommended to aliquot into single-use vials to avoid multiple freeze/thaw cycles. A slight precipitate may be present, but will not interfere with antibody performance.

Buffer: PBS, preserved with proclin300 or sodium azide (as specified on the Certificate of Analysis), pH 7.3.

Validation Data



Western blot analysis of Recombinant SARS-CoV-2 Nucleocapsid Protein (RP01264LQ), using SARS-CoV-2 N Protein Rabbit mAb, BSA and glycerol free (A20021) at 1:1000 dilution.

Secondary antibody: HRP-conjugated Goat anti-Rabbit IgG (H+L) (AS014) at 1:10000 dilution.

Lysates/proteins: 30 ng/10 ng/5 ng/2 ng per lane.

Blocking buffer: 3% nonfat dry milk in TBST.

Detection: ECL Basic Kit (RM00020).

Exposure time: 5s.