

A24888

Leader in Biomolecular Solutions for Life Science



ROR1 Rabbit mAb

Catalog No.: A24888 **Recombinant**

Basic Information

Observed MW

Calculated MW

104kDa

Category

SMab Recombinant Monoclonal
Antibody

Applications

FC

Cross-Reactivity

Human

CloneNo number

ARC63587

Background

This gene encodes a receptor tyrosine kinase-like orphan receptor that modulates neurite growth in the central nervous system. The encoded protein is a glycosylated type I membrane protein that belongs to the ROR subfamily of cell surface receptors. It is a pseudokinase that lacks catalytic activity and may interact with the non-canonical Wnt signalling pathway. This gene is highly expressed during early embryonic development but expressed at very low levels in adult tissues. Increased expression of this gene is associated with B-cell chronic lymphocytic leukaemia. Alternative splicing results in multiple transcript variants encoding different isoforms.

Recommended Dilutions

FC 1:500 - 1:1000

Immunogen Information

Gene ID

4919

Swiss Prot

Q01973

Immunogen

Recombinant protein (or fragment). This information is considered to be commercially sensitive.

Synonyms

NTRKR1; dJ537F10.1; ROR1

Contact

 www.abclonal.com

Product Information

Source

Rabbit

Isotype

IgG

Purification

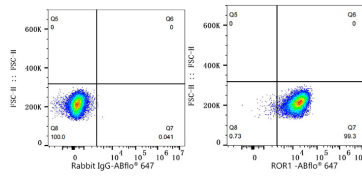
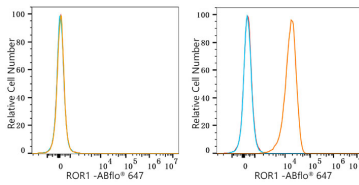
Affinity purification

Storage

Store at -20°C. Avoid freeze / thaw cycles.

Buffer: PBS containing 50% glycerol and 0.05% BSA, preserved with proclin300 or sodium azide (as specified on the Certificate of Analysis), pH 7.3.

Validation Data



Flow cytometry: 1×10^6 HEL cells (negative control, left) and MDA-MB-231 cells (right) were surface-stained with ROR1 Rabbit mAb (A24888, 2 $\mu\text{g}/\text{mL}$, orange line) or ABflo® 647 Rabbit IgG isotype control (A22070, 5 $\mu\text{l}/\text{Test}$, blue line), followed by Alexa Fluor® 647 conjugated goat anti-rabbit pAb staining. Non-fluorescently stained cells were used as blank control (red line).

Flow cytometry: 1×10^6 MDA-MB-231 cells were surface-stained with ABflo® 647 Rabbit IgG isotype control (A22070, 5 $\mu\text{l}/\text{Test}$, left) or ROR1 Rabbit mAb (A24888, 2 $\mu\text{g}/\text{mL}$, right).